

Seabreeze 5th wheel trailer and 2003 Dodge Quad-cab 2500 4x4 diesel pickup

Seller: Ed Yarbrough

Contact Info: Home 951 246-3436

Cell: 951 704-8154

email: edmarsha@comcast.net



Beautiful 32' 3-slide 2000 Seabreeze 5th wheel trailer for sale. Goose-neck equipped for smooth, secure towing. National RV quality. Interior beige tones with oak wood, Day-Night shades. Front bedroom features queen bed/storage, full mirrored cross closet, vanity with make-up mirror and lights, built-in drawers and night stands, TV, tub/shower with glass door and skylight, sink vanity with drawers, ample medicine cabinet, toilet room, additional closet washer/dryer ready. Living room has queen sofa sleeper, recliner with foot stool, magazine end table, two-drawer oak locking file for add'l. end table, entertainment center with TV/VCR and sound system, ceiling fan. Dining table with upholstered chairs. Rear kitchen features Corian counter tops, oven, 3 burner cooktop, microwave, built-in coffee maker, exhaust fan, lots of drawers/storage, kitchen water filter, Fan-tastic vent with rain sensor. Large awning plus awnings over all slides, outside shower, new tires, rear ladder, large storage areas, solar battery charger (5 watt), battery disconnect switch. Well cared for by original non-smoking owner. **\$26,000.00.** ALSO SELLING my 2003 Dodge Quad-cab 2500 4x4 "quiet" diesel pickup. Also goose-neck equipped, new Michelin tires, new Monroe gas shocks, new Exhaust brake system, Line-x bed liner, cross bed tool boxes, many extras. Very well taken care of by original owner. **\$28,000.00.**



CHASSIS & BODY CONSTRUCTION

1/2" steel "I" beam main frame
Steel framed walls with 1" x 1 1/2" tubular steel
Laminated high gloss Mende® fiberglass walls
Steel framed laminated roof
Front and rear molded gel-coat fiberglass caps
Steel framed laminated floor
Dent resistant Centrex® lower skirting
Ozite® fabric ceiling
Fully insulated and heated holding tanks with Centrex® panels
Stabilizer jacks on rear
Heavy duty electric front jacks

(2361 and 2370)

6,000 lb. axles with 12" brakes

Shock absorbers
Spare tire and wheel
Spare tire storage under unit
16" wheels and 8 lugs
Rear aluminum ladder (2300 and 2320)

APPLIANCES & ACCESSORIES

Large double door Dometic® refrigerator
Three-burner range with large 21" oven
GE® SpaceMaker microwave oven with fan and light
Systems monitor panel
Two telephone jacks

TV antenna and booster with 12V receptacle and jacks
27" color TV with remote in living area
Video switch box
Stereo VCR with remote
Home theater surround sound system with CD player
Wall mounted Sunbeam® hair dryer in bathroom
Black & Decker® dustbuster vacuum cleaner
Washer/dryer prep

HEATING VENTS AND AIR CONDITIONER

One 15,000 BTU ducted roof air conditioner with electronic thermostat
35,000 BTU ducted furnace
12V roof vent in bathroom
Skylight in shower

INTERIORS

Corian® countertops in kitchen
Solid oak raised panel cabinet doors (upper and lower)
Solid oak drawer fronts
Telestrut hardware on overhead cabinet doors
Ball bearing roller drawer guides
Laminate tops with designer edge in bathroom
Laminate tops on night stands in bedroom
Oak plank floor in kitchen
Slide-out pantry
Mini-blinds in kitchen area

Rubbermaid® kitchen waste basket
Built-in knife holder in kitchen countertop

Deluxe hide-a-bed sofa
Deluxe swivel recliner chair (2300)

Dining table with four chairs
Accessory table (2320, 2331, 2361 and 2370)
Day/night shades in living area and bedroom
Nylon carpet with pad in living area, bedroom and bath
60" x 80" queen size bed
Mirrored closet doors

Designer wall clock
Designer white ceiling fan

WINDOWS, DOORS AND AWNINGS

Living room slide-out with end wall windows
Slide room topper awning(s)
Main patio awning with metal cover

ELECTRICAL SYSTEMS

12V electrical harness with connectors
45 amp power converter with battery charger
120V centrally located electrical breaker box

SAFETY FEATURES

Fire extinguisher
LP gas detector
Smoke detector
120V GFI protected circuit in kitchen, bath and exterior
Deadbolt lock on entrance door
Egress windows

PLUMBING AND LPG SYSTEMS

Porcelain kitchen sink with single lever faucet
One-piece fiberglass tub/shower custom made by National RV with skylight
Glass shower door (n/a 2300)
Deluxe water flush toilet
Demand water system with water pump
10 gallon gas/electric water heater with electric ignition (DSI)
Water heater by-pass valve
Pressurized and gravity water fill
Outside shower
Two 30 lb. propane tanks with automatic change over
Systems compartment with easy access to hook-ups
Heated enclosed holding tanks and valves
Holding tank rinse system (waste tank only)

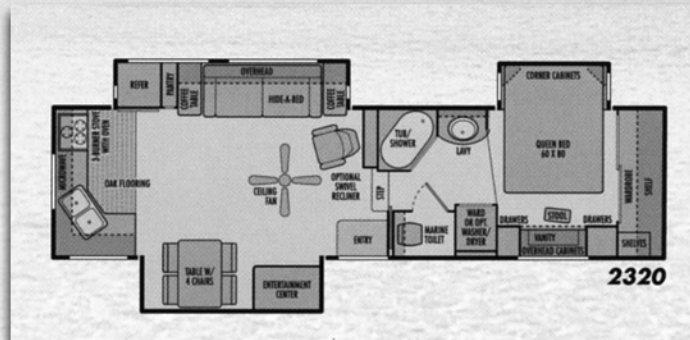
OPTIONAL FEATURES

12 cu. ft. side-by-side refrigerator with icemaker/ice maker
GE® convection microwave oven
Fan-Tastic® Vent with rain sensor in living area and bedroom
Water filter in kitchen
Accessory table (2300)

Combination washer/dryer (2300, 2320 and 2331)
13" color TV with remote in bedroom
Radius dual pane tinted safety glass windows
Battery disconnect switch
Joey slide-out storage box

Solar battery charger (5 watt)

Rear aluminum ladder (2331, 2361 and 2370)



WEIGHTS	2320
Gross Vehicle Rating	14,000 lbs.
Gross Axle Rating	12,000 lbs.
Hitch Weight	2,180 lbs.
Unloaded Vehicle Weight	11,690 lbs.
Maximum Carrying Capacity	2,310 lbs.
MEASUREMENTS	2320
Overall Length	32' 6"
Overall Height (Inc. Std. A/C)	12' 3"
Interior Height	84"
Interior Width	92"
Exterior Width	96"
TANK CAPACITIES	2320
Water Heater	10 gal.
Grey Tank #1	50 gal.
Grey Tank #2	50 gal.
Black Tank	50 gal.
Fresh Water Tank	100 gal.
Two LPG Tanks (Wet Cap.)	60 lb.

SEA BREEZE FEATURES & SPECIFICATIONS